



GUILDCREST ESTATES



The Sherwood St Stephens Park





GUILDCREST ESTATES

St Stephens Park Ramsgate, CT12 5NE £320,000

The Sherwood

This stunning 3 bedroom semi-detached property invites you to experience the perfect blend of comfort, style and modern living.

The light and spacious entrance hall with Moduleo LVT, provides access to the kitchen/diner, large downstairs cupboard, downstairs cloakroom and lounge.

In the kitchen you will find an exclusively designed kitchen, consisting of integrated appliances, a washer/drier, dishwasher and fridge/freezer, creating a simple yet elegant feel to the heart of the home. The kitchen/diner provides a light and airy environment, perfect for family mealtimes or entertaining guests.

Double doors open from the kitchen/diner to the lounge with luxurious carpets and patio doors leading out to the garden.

Upstairs, you will find three good-sized, light bedrooms and a family bathroom.





The bathroom is fully tiled with modern sanitaryware in white and a heated towel rail for a warm and cozy feel.

The front garden is fully landscaped and the rear garden is laid to turf and patio. The secure back garden space is perfect for summer days, soaking up the sun and relaxing. There is also driveway with parking for 2 vehicles.

With everything taken care of for you, this new, energy-efficient house gives you the perfect home to start creating new memories. We look forward to welcoming you to St Stephens Park.



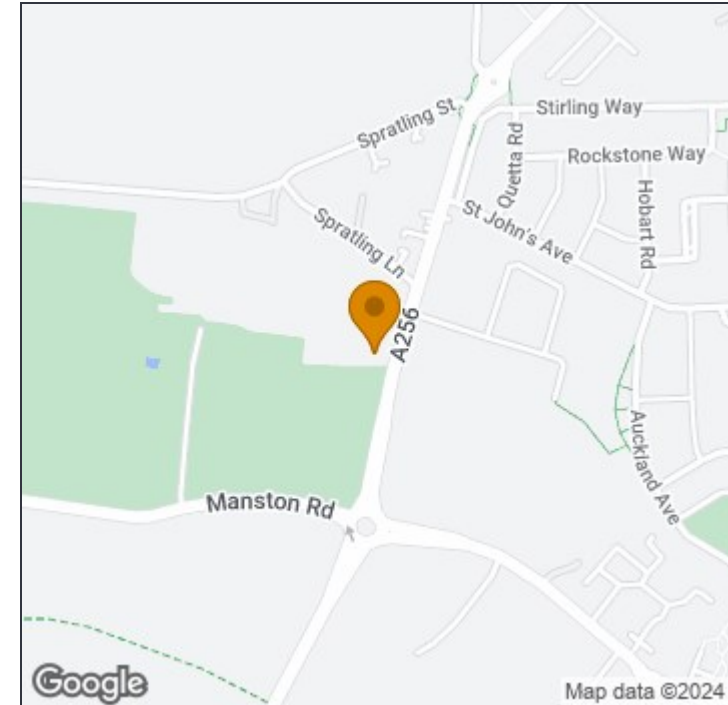
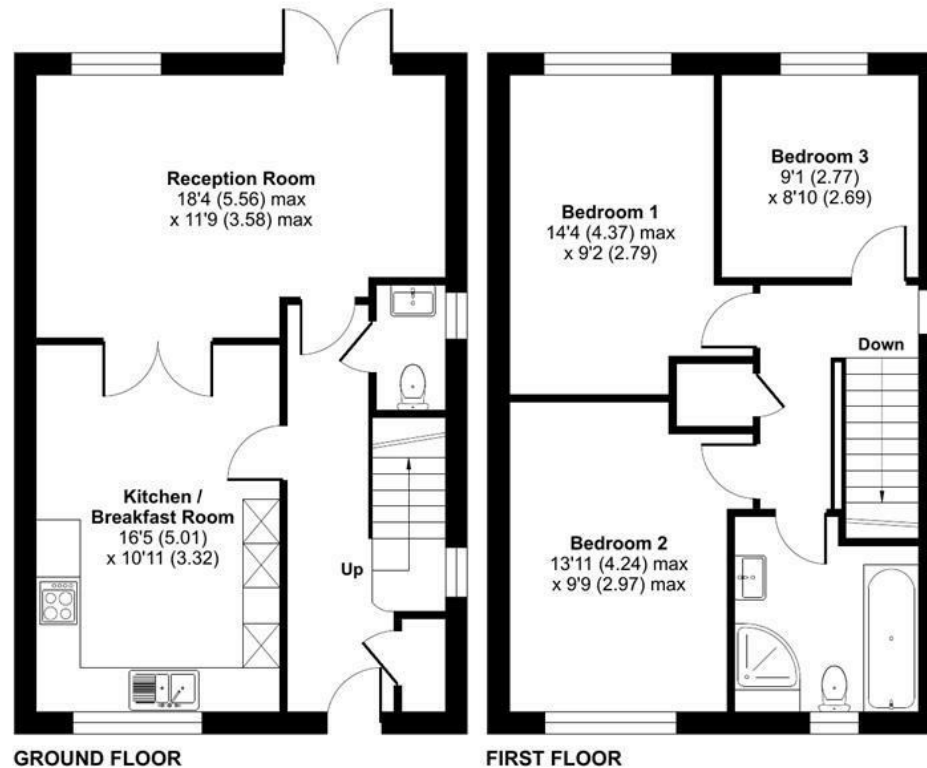
St Stephens Park, Ramsgate , CT12

Approximate Area = 1046 sq ft / 97.2 sq m

For identification only - Not to scale



GUILDCREST ESTATES



Disclaimer

These particulars, whilst believed to be accurate are set out as a general outline only for guidance and do not constitute any part of an offer or contract. Intending purchasers should not rely on them as statements of representation of fact, but must satisfy themselves by inspection or otherwise as to their accuracy. No person in this firm's employment has the authority to make or give any representation or warranty in respect of the property.



This floor plan was constructed using measurements provided to © nchecon 2024 by a third party.
Produced for Guildcrest Estates Ltd REF: 1138018

Manston

1 The Laurels Manston Business Park, Ramsgate,
Kent, CT12 5NQ

T: 01843 272 200

sales@guildcrestestates.co.uk

<https://www.guildcrestestates.co.uk>